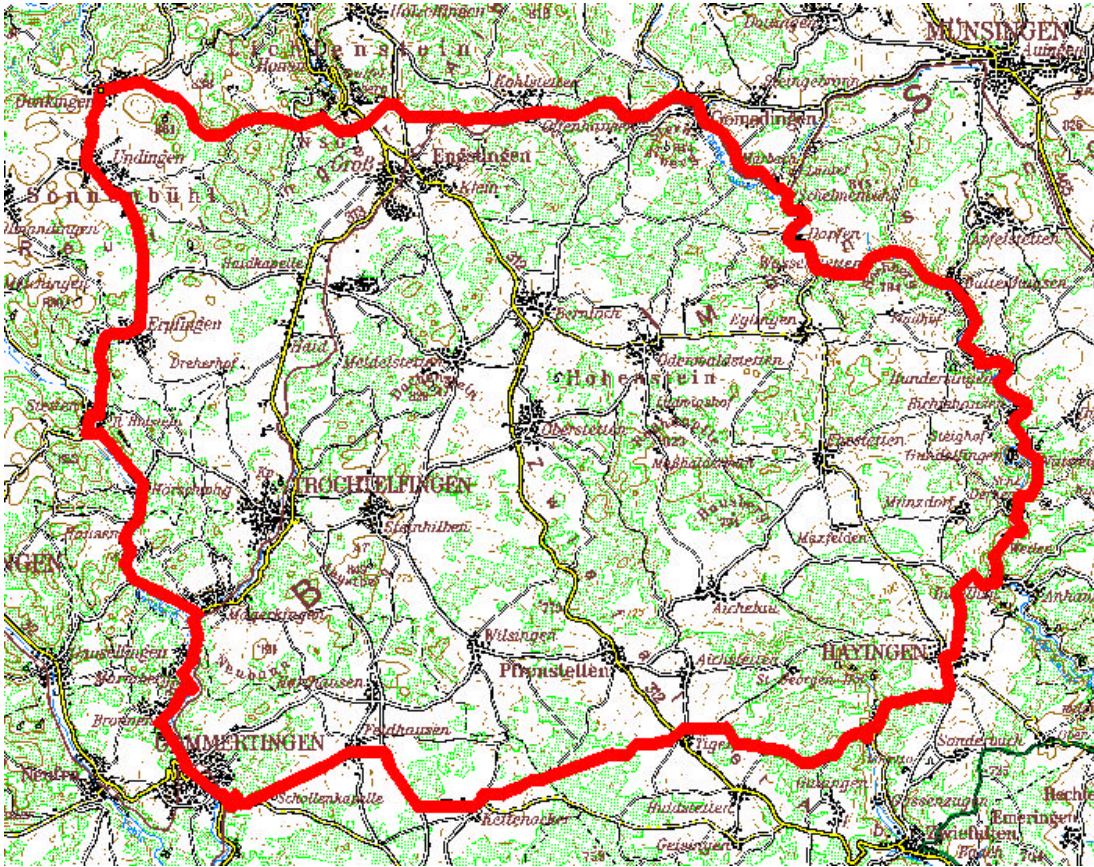


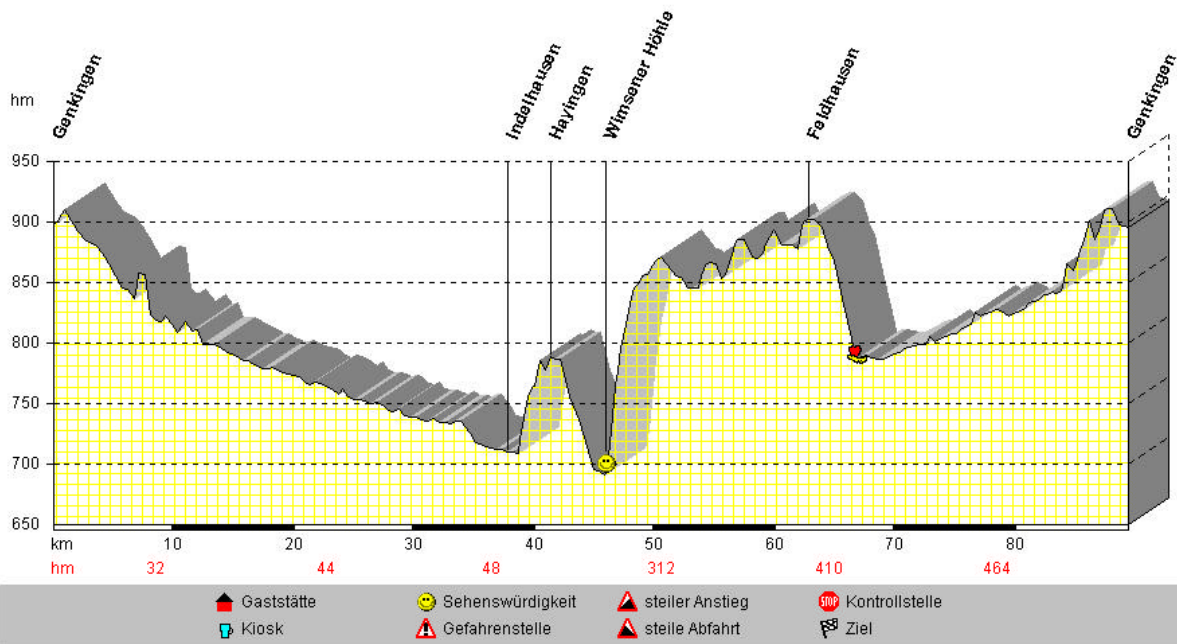
Rennrad - Tour – Genkingen – Wimsener Höhle

Genkingen – Gomadingen – Lauter Tal - Hayingen – Wimsen – Tigerfeld – Gammertingen –
Stetten u.H. - Genkingen



Wimsener Höhle

Distanz:	89,40 km	Fahrzeit:	03:41:07 h	Kategorie:	4 Sterne
Bergauf:	573 hm	AV-Tempo:	24,38 km/h		
Bergab:	577 hm	Max-Tempo:	46,40 km/h		



Profil created by HRMProfil (c) 98-2002 R.Welz